

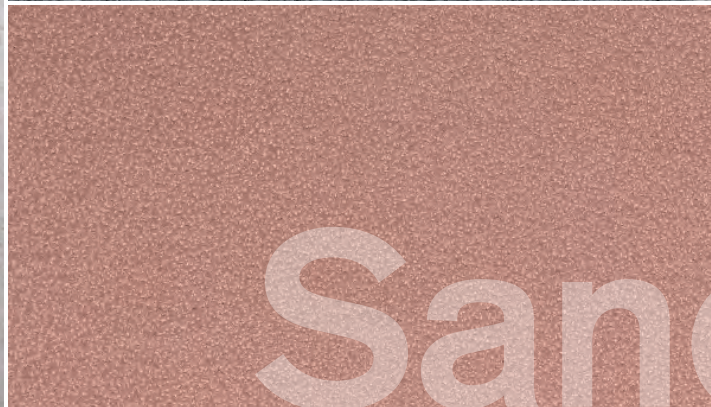
## Overview of our natural stones



Limestone



Granite



Sandstone



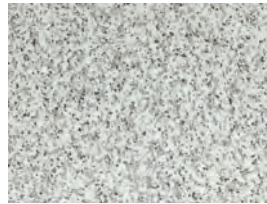
## Stone overview



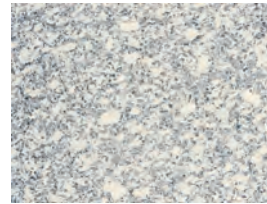
Limara  
Limestone



Creme Royal®  
Limestone



Waldstein Grey  
Granite



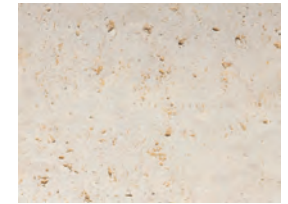
Crystal White  
Granite



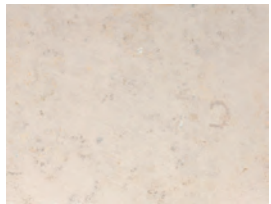
Creme Sintra®  
Limestone



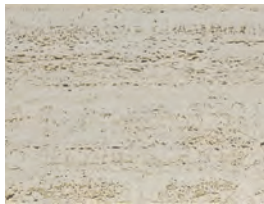
Pierre de Bordeaux  
Limestone



Trosselfels  
Limestone



Dietfurt Limestone  
Limestone



Roman travertine Pantheon  
Limestone



Waldstein Light  
Granite



Warthauer Light  
Sandstone



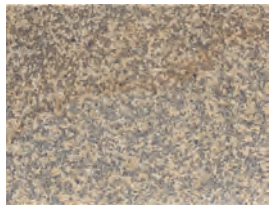
Hohenzollermpark®  
Sandstone



Waldstein Yellow  
Granite



Warthauer Yellow  
Sandstone



Waldstein SC  
Granite



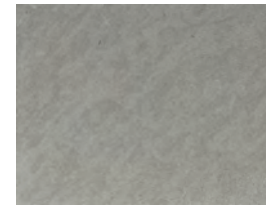
Kirchheimer Muschelkalk  
Limestone



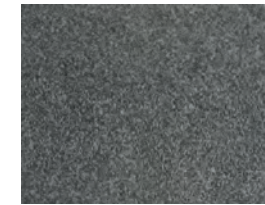
Muschelkalk Grigio Alpi  
Limestone



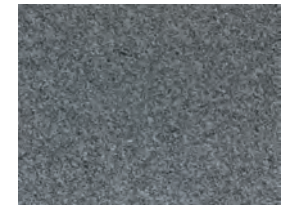
Flosser  
Granite



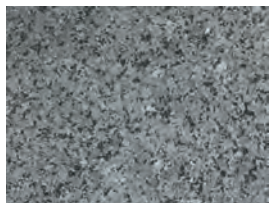
Noble Grey  
Sandstone



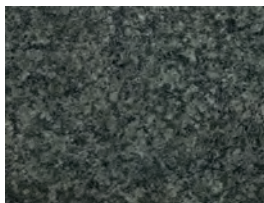
Fürstensteiner  
Granite



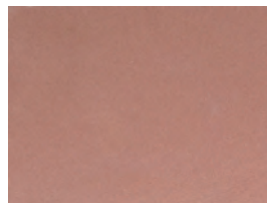
Celtic Blue  
Granite



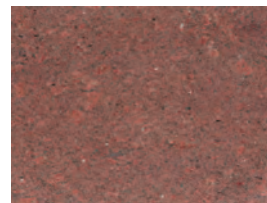
Kösseine  
Granite



Cape Green  
Granite



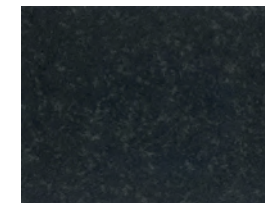
Wüstenzeller  
Sandstone



Wiking Red  
Granite



Champagne  
Granite



Nero Assoluto  
Granite



Swedish Black  
Granite

## Glossary of surface finishes

### **Aquapower®:**

Aquapower® is a new kind of surface finish. The stone is processed with high-pressure water at up to 2000 bar. This makes the surface rough to the touch at the same as intensifying the colour of the stone.

### **Bush hammered:**

The bush-hammering of the surface by a machine gives the stone a rough look with a lighter colour shade.

### **Chiseled:**

The stone is processed by machine, giving the surface wither a horizontal or vertical profile depending on choice.

### **Handsplit:**

The surface is split by hand using appropriate tools, giving façades a high-quality and unique appearance. The surface processing of the façade slabs during the manufacturing process by our stonemasons lends each stone a unique look and feel. The appearance varies depending on the cast of light and the viewing angle. The land width can be selected individually.

### **Honed C30 / C60 / C120 / C220:**

The following applies to honed surfaces: The larger the grain size of the honing tool used in the honing line, the finer the surface will be. Coarsely honed surfaces create a uniform and brighter appearance. Finely honed surfaces reveal more of the colour and texture.

### **Polished:**

Polishing is the final finishing process applied to the previously honed surface. It produces a totally smooth surface which may shine or have a mirror effect, depending on the stone.

### **Flamed:**

A flame from the flame-cutting torch installed on the production line briefly heats the stone surface to such a high temperature that expansion causes stone particles to be blasted off. The even spalling effect creates a even, rough-split surface in which the crystalline structure is clearly apparent. The stone must contain quartz in order for this surface finish to be applied.

### **Water Jet:**

The freshly sawn surface is blasted with a water jet at 300 bar.

### **Blasted:**

The surface is created using round plates and rolls on the honing line. The look corresponds to that of a sand-blasted surface.

### **Sandblasted:**

The surface finish is achieved with a sandblaster. As with a blasted surface, the result is a bright and uniform look with aslightly rough feel.

### **Brushed:**

The surface of the stone is made smooth using brushes. This makes the surface softer to the touch. The degree and colour shade can be varied by using different brushes.

### **Sand Cut:**

The surface generated on steel grit gang saws is left unchanged following sawing.

It is also possible to combine surface finishes, for example the combination of hand-split and Aquapower is often selected, because it combines a rough feel with an intensive colour shade.

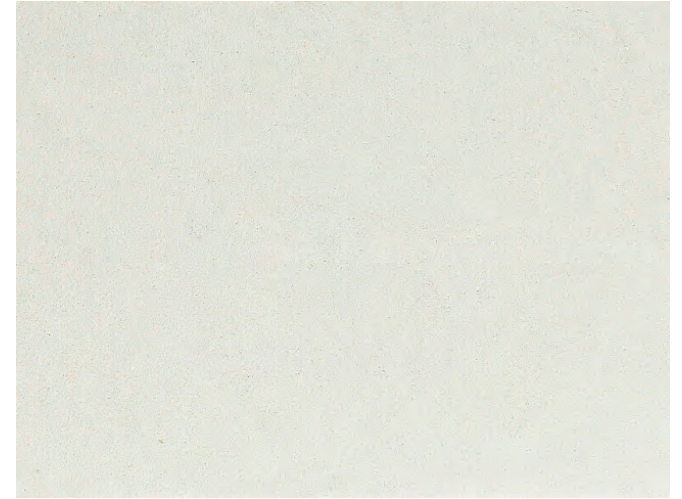
**Limara surfaces** WHITE LIMESTONE



aquapower



honed C60



blasted



**Creme Royal® surfaces** WHITE LIMESTONE



aquapower



honed C60



blasted

**Waldstein Grey surfaces** WHITE-GREY GRANITE



polished



aquapower



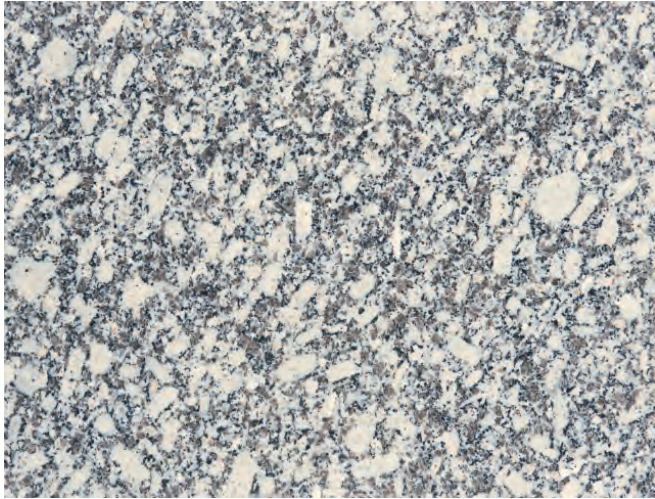
water jet



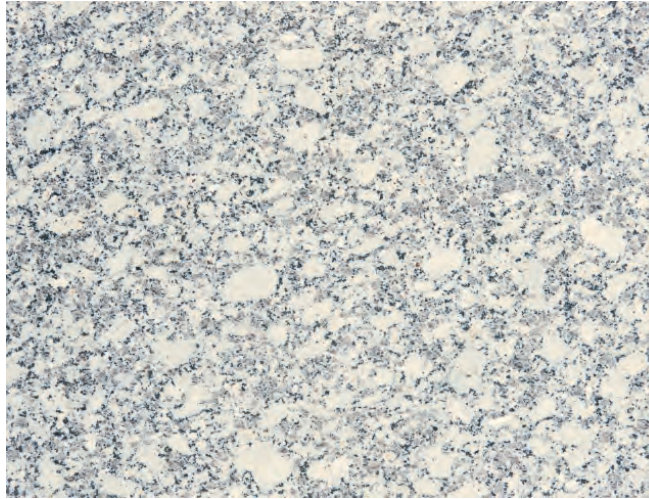
flamed



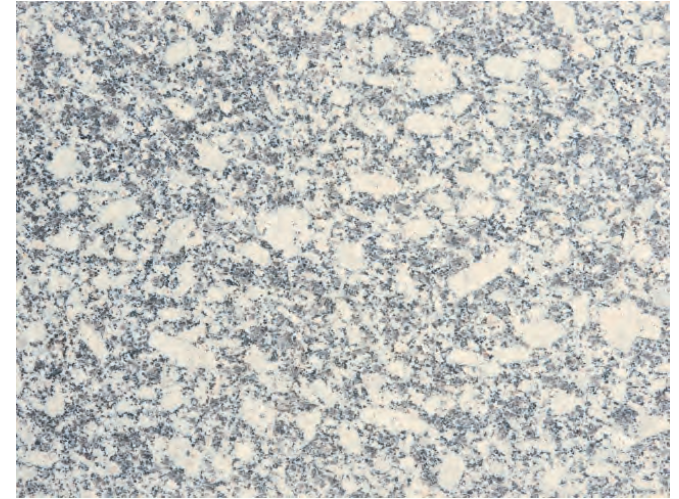
**Crystal White surfaces** WHITE-GREY GRANITE



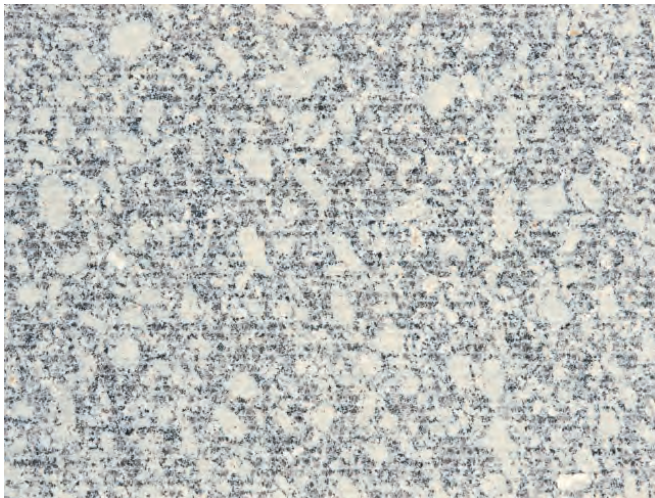
aquapower



water jet



flamed and brushed



handsplit



**Creme Sintra® surfaces** BEIGE LIMESTONE



aquapower



honed C120



honed C60



blasted



**Pierre de Bordeaux surfaces** BEIGE LIMESTONE



aquapower



honed C120



honed C60



blasted

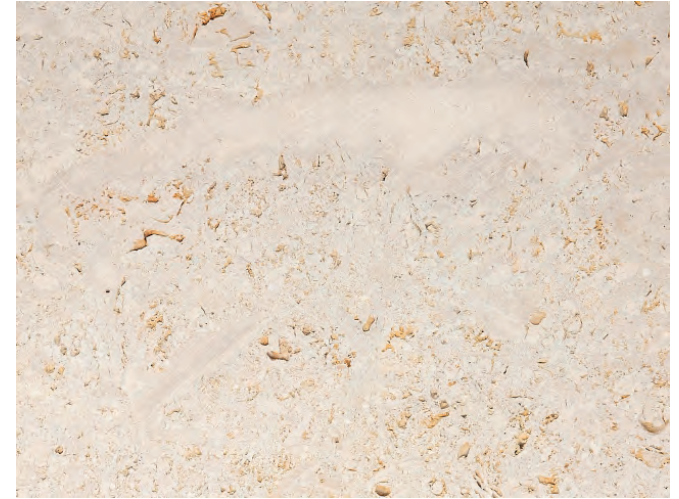
**Trosselfels surfaces** BEIGE LIMESTONE



honed C120



honed C60



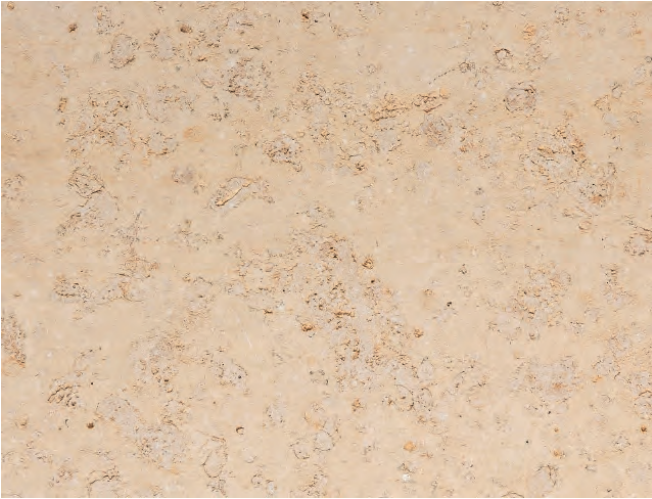
honed C30



blasted



**Dietfurt Limestone surfaces** BEIGE LIMESTONE



aquapower



honed C120



honed C60



honed C30



blasted

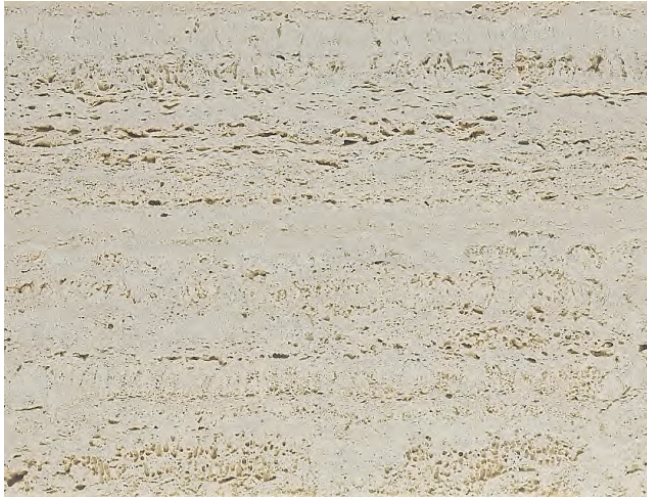


plate-hammered

**Roman travertine Pantheon** BEIGE LIMESTONE



honed C120



honed C30



**Waldstein Light surfaces** BEIGE GRANITE



aquapower



honed C120



water jet



water jet and fine-brushed



flamed



**Warthauer Light surfaces** LIGHT YELLOW SANDSTONE



bush hammered



chiselled



honed



**Hohernzollernpark surfaces®** YELLOW SANDSTONE



honed C120



bush hammered



chiselled



**Waldstein Yellow surfaces** YELLOW GRANITE



polished



aquapower



water jet



flamed



**Warthau Yellow surfaces** YELLOW SANDSTONE



honed C120

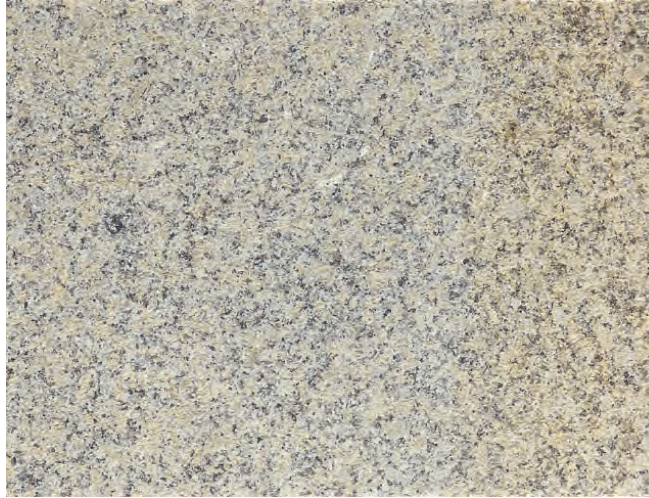


bush hammered

**Waldstein SC surfaces** YELLOW-BROWN GRANITE



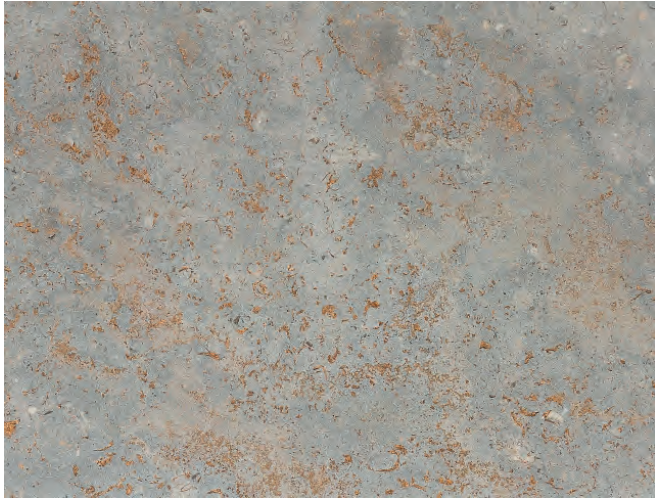
flamed



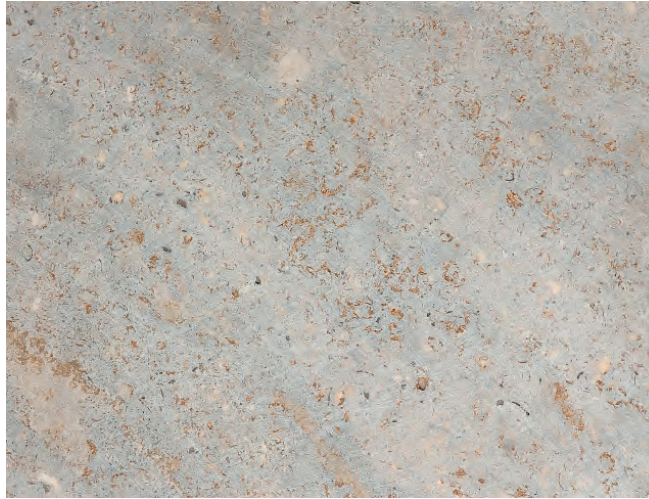
bush hammered



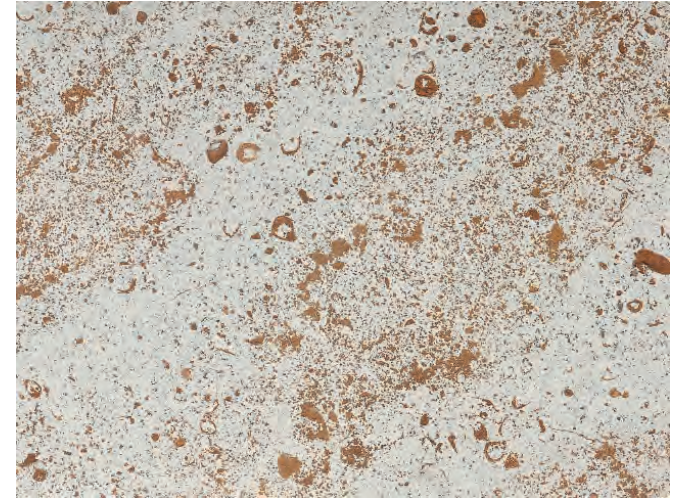
**Kirchheimer Muschelkalk surfaces** GREY-BROWN LIMESTONE



honed C60



honed C30



blasted



**Muschelkalk Grigio Alpi surfaces** GREY-BROWN LIMESTONE



aquapower



honed C220



honed C60



blasted



coarse-brushed



fine-brushed



**Flosser surfaces** GREY-YELLOW GRANITE



aquapower



honed C120



water jet



flamed



handsplit



**Noble Grey surfaces** GREY SANDSTONE



aquapower



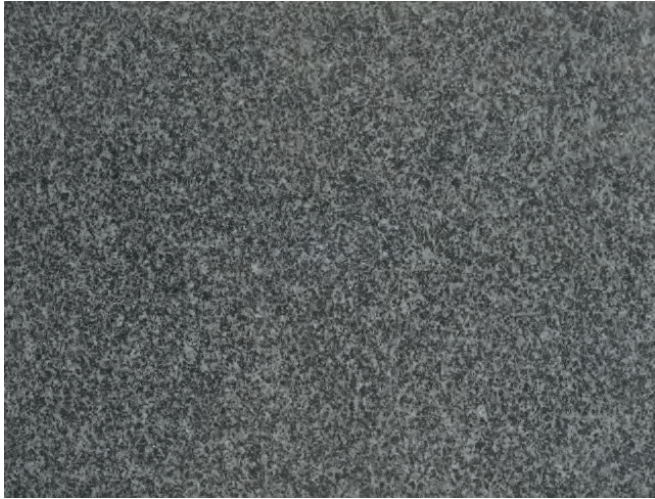
honed C120



bush hammered



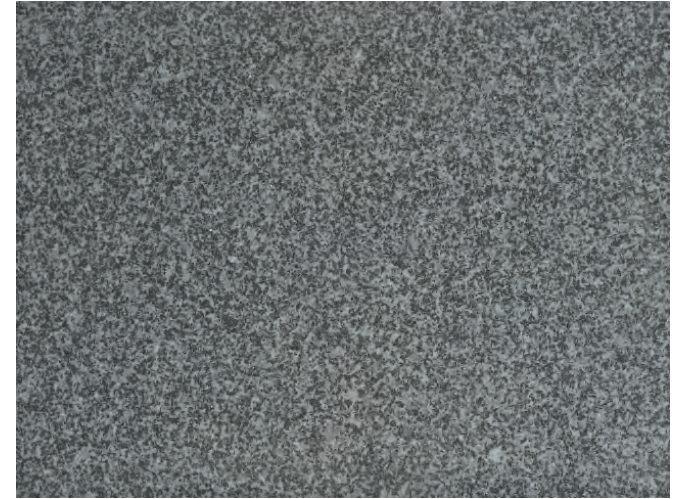
**Fürstensteiner surfaces** GREY GRANITE



aquapower



honed C120



brushed



flamed



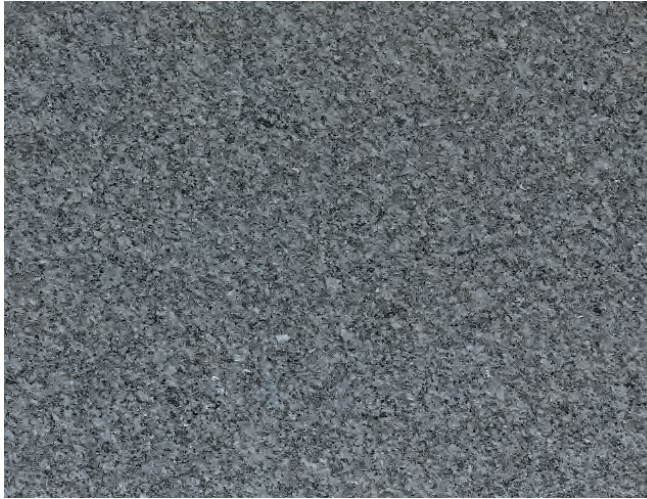
water jet



**Celtic Blue surfaces** BLUE GRANITE



polished



aquapower



water jet



flamed



**Kösseine surfaces** BLUE GRANITE



polished



aquapower



water jet



flamed



**Cape Green surfaces** GREEN GRANITE



polished



aquapower



honed C60



water jet



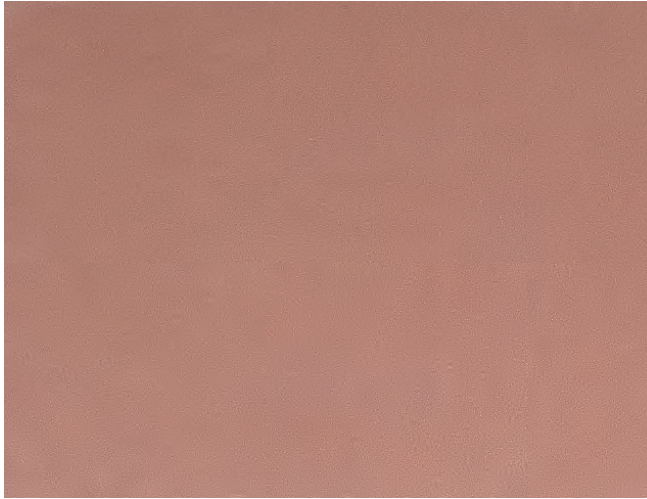
flamed



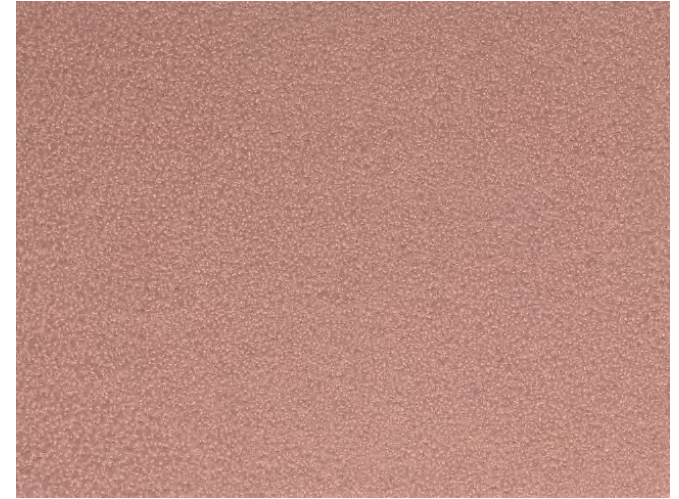
**Wüstenzeller surfaces** RED SANDSTONE



aquapower



honed C120



bush hammered



sand cut



**Wiking Red surfaces** RED GRANITE



polished



aquapower



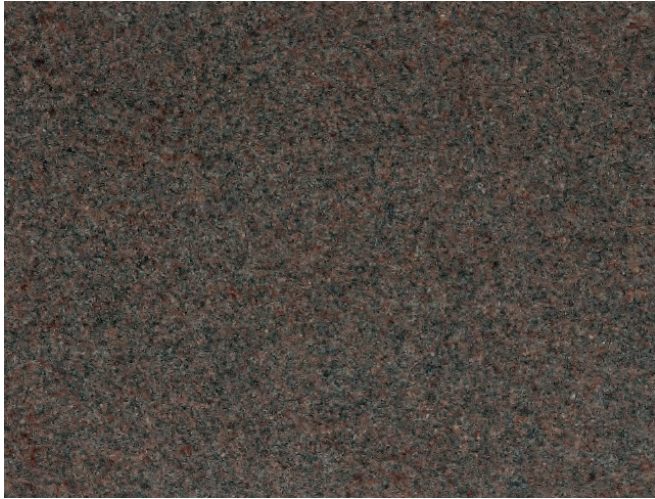
flamed



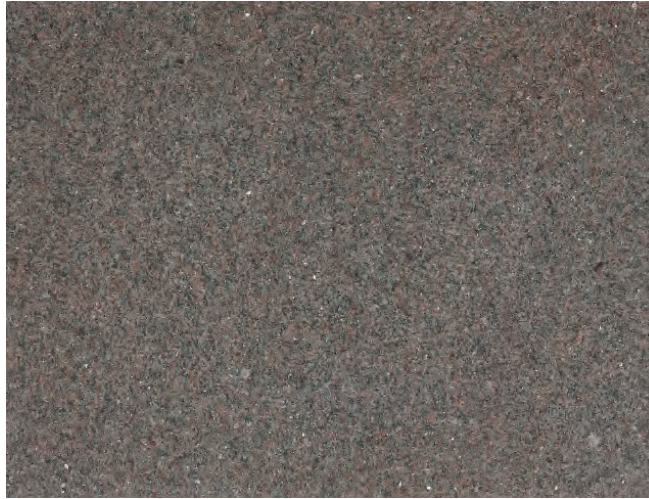
water jet



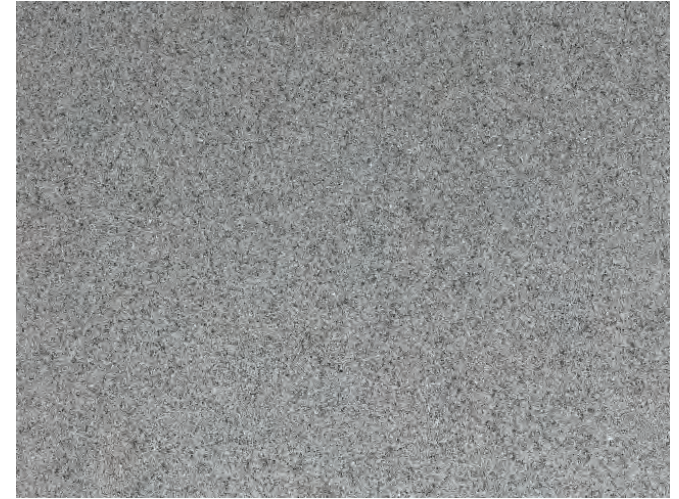
**Champagne surfaces** BROWN GRANITE



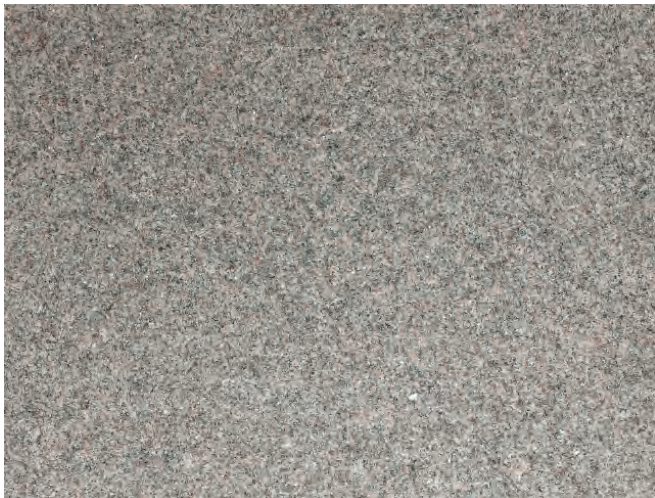
polished



aquapower



water jet



flamed



**Nero Assoluto surfaces** BLACK GRANITE



polished



aquapower



honed C120



flamed



**Swedish Black surfaces** BLACK GRANITE



aquapower



flamed



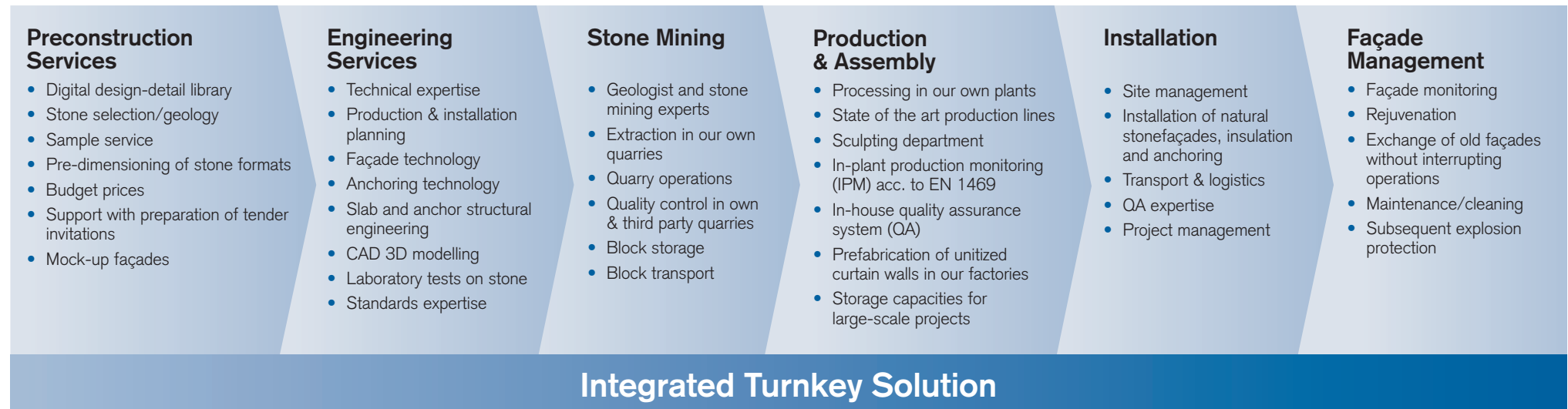
honed C120



handsplit and brushed



## From planning through to installation and maintenance: Our range of services



### Consulting for our customers

We are at your side as an experienced partner in each project phase. Right from the selection, this expertise will prove to be just as useful as our stone library with 5,000 samples and large mock-up façades.

### Selection

With its many colours, structures, textures and surface variants, our natural building material of natural stone offers architects and clients the most diverse range of fascinating application options.

### Extraction of unprocessed blocks and quality control

Extraction of unprocessed blocks in our own quarries as well as contracted quarries, together with the associated painstaking checking right at the source by our geologists, guarantee the best possible quality and reliability for our customers.

### Technology and planning

Our engineering department puts the design concept prepared by architects into practice as production plans using CAD techniques. They contain all the necessary information as well as a structural engineering verification for the natural stone and the anchoring.

### Production

Our manufacturing process starts with the unprocessed block. The project data established by production planning is used for controlling the latest CAM systems in our three production plants. All kinds of surface processing methods such as „Aquapower“ or „Hand-split“ lend the natural stone its character. The individual workpieces are provided ready for installation following the finishing process. Timely deliveries are assured by our large production capacities and reliable logistics.

### Installation and site management

Trained setters carry out the installation work on-site. Our qualified site managers are responsible for controlling their work and ensuring that specifications and deadlines are complied with.

Our QA experts monitor the execution.

### Façade management

Our expertise provides you with support throughout the entire lifecycle of your façade.



## Contact



**[www.hofmann-stone.com](http://www.hofmann-stone.com)**

We look forward to offering you advice in person. Your point of contact:

Dipl.-Ing.  
**Sebastian Utz**  
Head of Sales

Cell: +49 151 52984315  
[sebastian.utz@hofmann-stone.com](mailto:sebastian.utz@hofmann-stone.com)

**HOFMANN NATURSTEIN GmbH & Co. KG**

Anton-Hofmann-Allee 2  
97956 Werbach-Gamburg, Germany  
Phone: +49 9348 81 0  
Fax: +49 9348 81 48  
[info@hofmann-naturstein.com](mailto:info@hofmann-naturstein.com)

BERLIN · FRANKFURT · COLOGNE · KRAKOW · LONDON · MUNICH · NEW YORK · QATAR · ZURICH